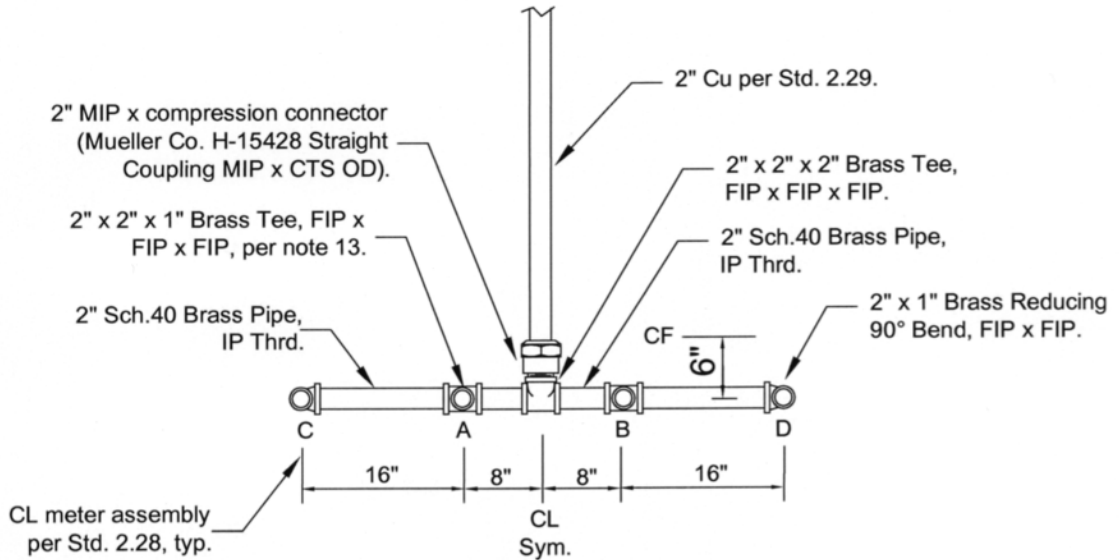


8. For installation schedule meter and box, refer to Std. 2.13.
9. For pressure connection to Ductile Iron mainline and / or connection to 4" Ductile Iron mainline, install Double Strap Saddle, per Std. 2.05.
10. A minimum of 24" cover over service lateral is required.
11. Tap must be a minimum of 24" from end of pipe and a minimum of 12" laterally from another tap (either side of pipe).

Approved by: *Dr. Blalock* 12-23-06
 City Engineer R.C.E. 14527 Date



MANIFOLD DETAIL
Plan

12. Irrigation meters shall not be connected to manifold. Provide separate service lateral.
13. For two and three meter settings, use 2" x 1" Reducing 90° Bend at locations A and / or B..
14. For Dual Service to separate properties (meters set adjacent), manifold shall be centered on property line extension.

Drawn by: JSWilliams Date: December 21, 2006
 Revised by: JSWilliams Date:
 Effective Date: January 9, 2007



City of Glendora
Public Works Department
STANDARD DESIGNS & SPECIFICATIONS

Adopted for use on Public and Private Improvements

S.D. & S. NO.

2.42

Page 2 of 2