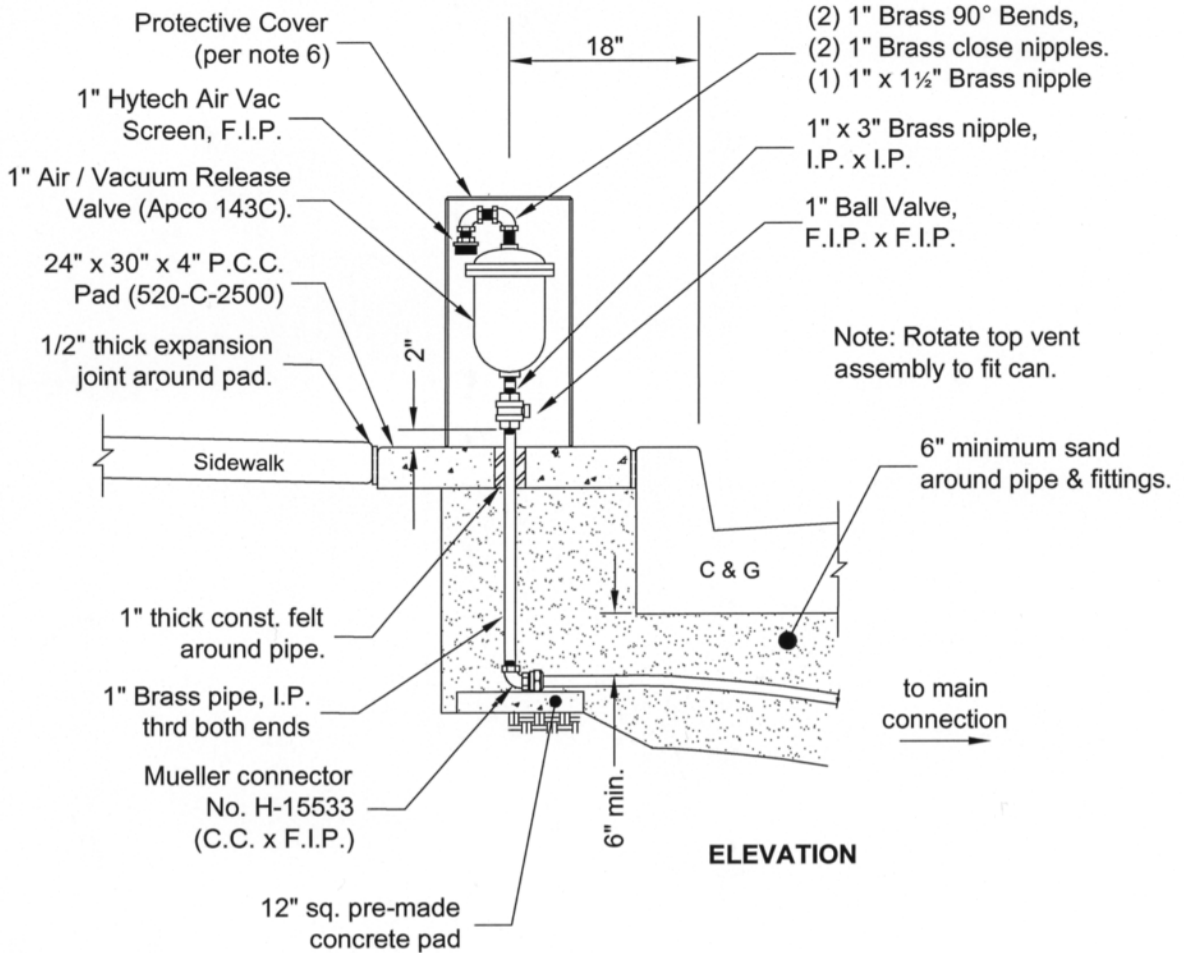


AIR / VACUUM RELEASE VALVE ASSEMBLY, 1" FOR DUCTILE IRON MAINLINE



1. Sand backfill (12" minimum) required around all underground pipe and fittings.
2. Minimum clearance of 5' required from driveways & structures.
3. Pipe shall maintain an ascending slope from ball valve to air / vacuum release.
4. Pad shall be level and finished smooth.
5. 1" Brass pipe shall be installed vertically plumb.
6. Protective Cover shall be per S.D.&S. 2.12 (Type I) or Armorcast Products Company 12" x 36" Part No. P6002003 (Sandstone).
7. P.C.C. Pad for Armorcast cover shall be 24" x 24" x 4".
8. Where hot tap is required, use Case II connection at main.

Approved by:

J. Williams 12-29-06

Date

14527

City Engineer R.C.E.

Drawn by: J.S. Williams

Date: June 25, 1979

Revised by: J.S. Williams

Date: December 27, 2006

Effective Date: January 9, 2007



City of Glendora
Public Works Department
STANDARD DESIGNS & SPECIFICATIONS

Adopted for use on Public and Private Improvements

S.D. & S. NO.

2.11

Page 1 of 2