

WATERSHED MANAGEMENT in the SAN GABRIEL RIVER WATERSHED

Help us improve water quality in the San Gabriel River Watershed! We are interested in hearing about your project ideas, community needs, and possible opportunities to work with others in achieving water quality goals.

What is a stormwater permit?

Stormwater runoff travels over our cities and enters the storm drain system. In order for cities to operate their storm drains, they must obtain a stormwater permit. In 2012, a new permit was adopted by the Regional Board. The permit is intended to provide multiple benefits, consisting of, but not limited to:

- Protect water quality in our rivers, streams, lakes, reservoirs, and the ocean
- Protect human and wildlife health
- Provide opportunities to capture and use the stormwater runoff to recharge our groundwater basins
- Provide multiple benefits including habitat improvement, aesthetic value, and recreation areas.

Who is affected by it?

The permit affects the entire County of Los Angeles including the cities, businesses, and the public. In short, we are all responsible for doing our part to maintain water quality in our region.

What is an Enhanced Watershed Management Program (EWMP)?

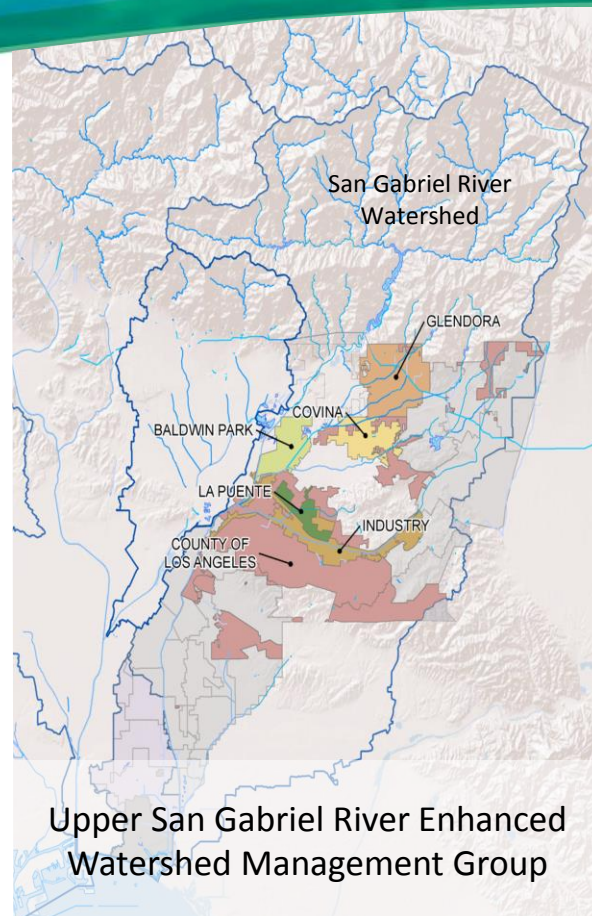
The County and cities are currently developing an EWMP to address the requirements of the permit. The EWMP will identify potential project locations, Best Management Practices (BMPs), and a comprehensive monitoring program. The EWMP will adapt to new data and information over time. Once implemented, the EWMP will serve as a road map to improve water quality in the watershed.

When will the EWMP be completed?

The EWMP is currently being drafted and anticipated to be completed by June 2015. The Program will provide a thorough foundation for new stormwater management practices.

Why is this important?

The EWMP is a large, coordinated effort and requires the support of many organizations and individuals, including you, in order to be a success. If developed and implemented correctly, the program can help restore the health of our waters and provide sustainability for years to come. We welcome you to participate in the protection of our valuable water resources.



How can you help?

We want to hear from you! We would greatly appreciate feedback from you, including:

- Help on identifying locations for projects that capture/treat stormwater runoff
- Ideas on how to reduce urban runoff
- Providing feedback on stormwater management projects
- Assisting us in identifying stakeholders as potential teaming partners
- Ideas on funding sources and partnership opportunities

Please see attached form to submit project information. Email completed form and any questions to:

LINDA LEE MILLER, P.E.,
County of Los Angeles Department of Public Works, Watershed Management Division
(626) 458-7148 | LLEE@dpw.lacounty.gov

WATERSHED MANAGEMENT IN THE SAN GABRIEL RIVER WATERSHED - PROJECT INFORMATION FORM

Please email completed form to
Linda Lee Miller - LLEE@dpw.lacounty.gov

Name of Project Proponent:

Contact Information (Phone/Email):

Project Name:

Type of Project:

Current Phase of Project: Conceptual Planned Existing

Project Location (LAT/LON or Street Address):

Description of Project: